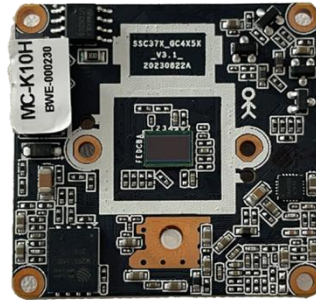


MC-K10H Smoke&Flame Recognition Camera Module



The MC-K10H module is a camera module designed for the timely detection and alarm signaling of smoke and flames, suitable for both indoor and outdoor environments. Its smoke and flame detection algorithms can identify smoke and flame regions within dynamic video streams. After multi-frame fusion calculations, it can output alarm information for smoke and flames.

Additionally, the MC-K10H is an easy-to-develop and integrate module compatible with other digital systems. It supports local area network (LAN) monitoring, configuration, and upgrades. The module comes with a standard SDK for both Linux and Windows platforms.

Key Features

- 1/3" 4MP CMOS Sensor
- Support H.256+, H.256, H.264 encoding.
- Support soft light sensitivity and full color .
- Support smart analytical, smoke and flames detection.
- Support two way audio, voice broadcast, custom voice messages.
- Support image flipping and support digital WDR.
- Support ONVIF.
- Support IP filter and block list.
- Support auto-focus and PT
- Support TF card/WiFi/4G/ alarm input and out/

Technical specifications:

Image sensor	
Model	MC-K10H
SOC	SSC37D
Sensor	1/3" 4MP CMOS
Maximum resolution	2560*1440@25fps
Minimum illumination	
Camera	
AGC	Auto/Manual
S/N ratio	
Shutter speed	
Wide dynamic range	Digital WDR≥73.7dB
Exposure mode	Auto/ Manual/shutter mode
White balance	Auto/ Manual /ATW/ Indoor/Outdoor/ lamp
Day & Night	
Image resolution	
Main stream	2560*1440/2304*1296/1920*1080/1280*720/1944*1944/1200*1200@25fps
Sub stream	640*360/VGA/D1
Audio resolution	
Audio Out/In	Supported/Wired required
Audio processing	G.711 codec standard
Protocol	
Network protocol	HTTP/RTSP/DHCP/NTP/P2P/ONVIF and more
Interface	
Network interface	10/100Mps Base-T Ethernet, 1*RJ45 interface
IRCUT interface	Integrated IRCUT switching circuit with automatic, external, manual, and timed control for day/night mode.
Light board interface	PWM yellow light
Storage interface	TF memory card up to 512GB
Extra interface	Expandable with either 1 channel of IO output or 1 channel of 458 interface.
General	
Power supply	DC 12V protected from lightning
Additional functions	OSD supported/Two way audio/Support audio and video synchronously/smoke and flame detection /voice alarm/
Standard	International: IEC61000-4-5 China: GB/T17626.5
Size	(L)38mm * (W)38mm
Operation temperature	-40°C~+65°C
Working humidity	≤90% RH (non-condensing)

Additional Note

Suitable Install environment: Indoor / Outdoor

Avoid objects: Please avoid red objects and reflective surfaces after installation, Ex:red lights,car tail lights, sunlight reflection etc.

Recommended installation height: Distance from the ground ≥1.5meters

Ambient Light: Supports normal indoor and outdoor lighting, backlight, side light, and low light environments (does not support IR).

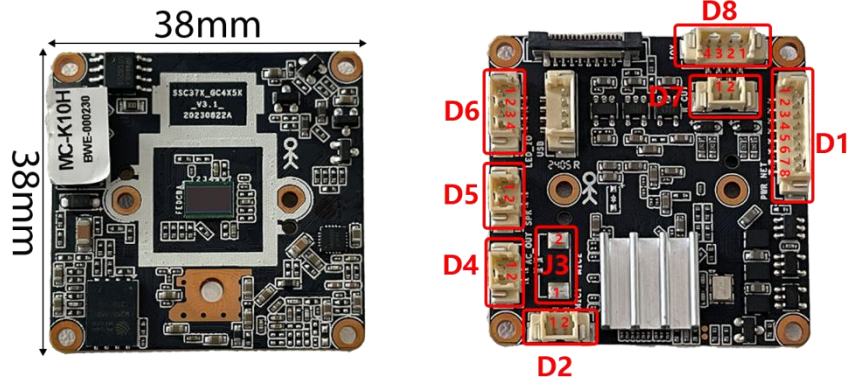
Target Recognition Range:

Minimum flame: 30x30 @ 1080P, optimal flame: 60x60 and above @ 1080P

Minimum smoke: 30x30 @ 1080P, optimal smoke: 60x60 and above @ 1080P

Target Clarity:

Not supported: overexposure, reflection, motion blur, defocus, IR, dim lighting, blur.



IO	FUNCTION	PIN	PIN NAME	DESCRIPTION
D1	8-pin network & power interface	1	DC12V+	DC 12V input
		2	GND	Ground
		3	RJ45_6	RX-
		4	RJ45_3	RX+
		5	RJ45_2	TX-
		6	RJ45_1	TX+
		7	RESET	Reset
		8	LED+	Network status indicator light
D2	2-pin Primary Microphone	1	MIC+	Primary microphone
		2	MIC-	
D3	2-pin Secondary Microphone	1	MIC+	Secondary microphone
		2	MIC-	
D4	Audio out	1	AUDIO_OUT	Audio output
		2	GND	Ground
D5	Speak out	1	SPK+	Speak output (8 Ω 2W)
		2	SPK-	
D6	Light control	1	CDSIN	CDS (Since the MC-K10H is a smoke and flame detection module, we recommend not using interface D6.)
		2	GND	Ground
		3	PWM1	IR
		4	PWM0	Yellow light /White light
D7	IR-CUT interface	1	IR-CUT Signal control	Output
		2		
D8	Extended interfaces IO / RS485	1	GND	Ground
		2	TX	Serial interface or RS485 interface
		3	RX	
		4	IO-OUT	Spken